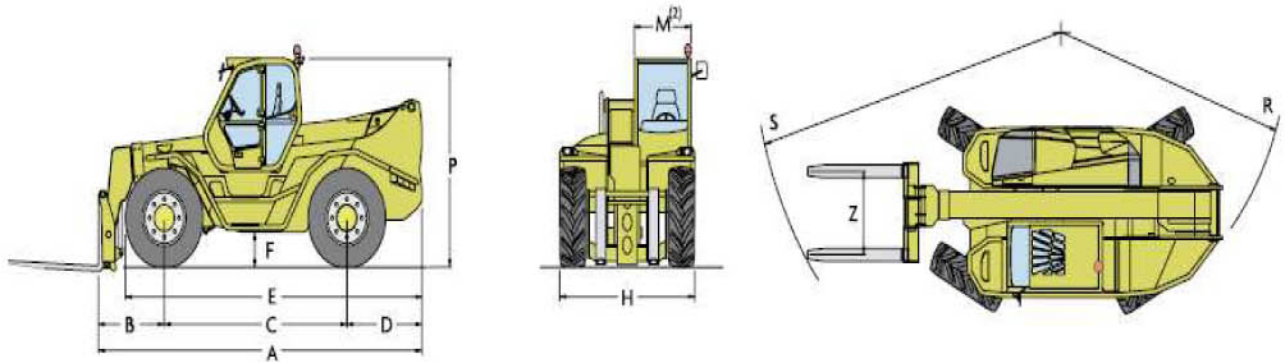


# MERLO P 101.10 HM



| PANORAMIC                              |    | P 101.10 HM | Dimensions P 101.10 HM |    |          |
|--|----|-------------|------------------------|----|----------|
| <b>Weight</b>                          |    |             | A                      | mm | 5740     |
| Total empty weight (with forks)        | kg | 15200       | B                      | mm | 1160     |
| <b>Performance</b>                     |    |             | C                      | mm | 3240     |
| Maximum rated capacity                 | kg | 10000       | D                      | mm | 1335     |
| Maximum lift height                    | m  | 9.8         | E                      | mm | 5235     |
| Maximum forward reach                  | m  | 5.7         | F                      | mm | 450      |
| Maximum height at maximum load         | m  | 7.1         | H                      | mm | 2400     |
| Forward reach at maximum load          | m  | 1.8         | M <sup>(2)</sup>       | mm | 995      |
| Lift capacity at full lift height      | kg | 5000        | P                      | mm | 2850     |
| Lift capacity at maximum forward reach | kg | 2750        | R                      | mm | 4300     |
|  |    |             | S                      | mm | 5700     |
|  |    |             | Z                      | mm | 635+1170 |

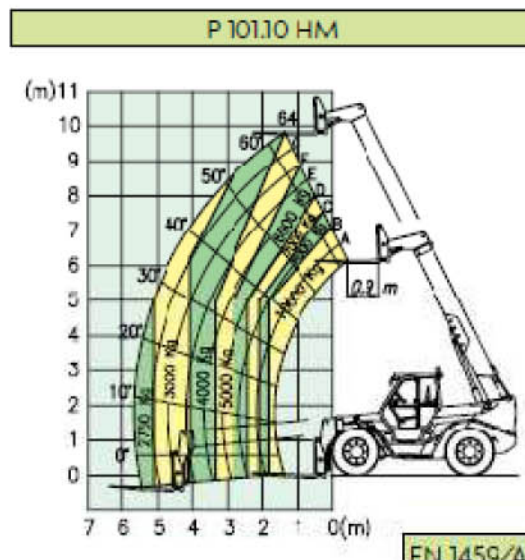
## WINNER HANDLING

SUSSEX: 01903 230700

SURREY: 01483 456789

EMAIL: SALES@WINNERHANDLING.CO.UK

# MERLO P 101.10 HM



## **Cab**

- In compliance with ISO 3449 (FOPS) and ISO 3471 (ROPS) directives.
- '6 in 1' proportional electronic joystick control.

## **Boom**

- Telescopic with sections sliding on adjustable anti-friction pads.
- Hydraulic extension system mounted internally inside the boom for maximum reliability and protection.
- Integrated hydraulically operated device for side shift.

## **Tool-carrier carriage**

- Hydraulic quick coupling/detachment device directly controlled from the cab.
- Standard double acting hydraulic service at boom head for hydraulic attachment operation.

## **Forks**

- Of floating type: length 1800 mm. Section 200 x 80 mm (on P 45.18 HM and P 65.14 HM length 1200 mm, section 125 x 45 mm).
- The fork spread is manually adjustable.

## **Steering**

- Four wheel steer, with three steering modes selected from the cab.

## **Engine**

- 6 cylinder turbo intercooler Nef low emissions (Euro 2) diesel engine, with electronically regulated direct injection, water cooling and rated at 107 kW (145 HP) at 2300 rpm (97/68/CEI).

## **Transmission**

- Hydrostatic with electronically regulated variable displacement motor.
- Automatic and continuous speed variation from standstill to maximum speed, simply by operating the accelerator pedal.
- Electrically operated two speed range gearbox.
- Finger-Touch system which permits change in driving direction even when the machine is moving, without the operator having to remove his hands from the steering wheel.
- Permanent four wheel drive traction.

## **Brakes**

- Hydraulically controlled oil immersed disc service brakes.
- Automatic hydraulic park brake with hydraulic release feature.

## **Hydraulic system**

- Load-Sensing type.
- Variable displacement axial hydraulic pump.
- Maximum flow: 138 l/min.
- Service pressure: 230 bar.

## **Electrical system**

- 12 V, 160 Ah battery and 90 A alternator.
- Road lighting complete with rotating beacon.

## **Capacities**

- Hydraulic system: 180 l
- Fuel tank: 185 l
- Hydrostatic oil: 12 l
- Engine oil: 12 l
- Engine cooling: 12 l

## **Tyres**

- 17.5-25 22 PR

## **Options**

- Radio-control for material lifting operations.
- Cab mounted working lights.
- Front screen guard.
- Prearrangement for attachments requiring two hydraulic services.
- Antitheft system with immobilising device.
- Air conditioning.

**WINNER HANDLING**

SUSSEX: 01903 230700

SURREY: 01483 456789

EMAIL: SALES@WINNERHANDLING.CO.UK