




# MANITOU

## MLT 523 T

### MLT 523 T


 **Lifting capacity** .....2300 kg  
 at 500 mm from forks heels  
 Tipping load at maximum reach : .....1535 kg  
 Tear out force with bucket  
 to ISO 8313 .....4050 daN


 **Lifting height** .....4.97 m  
**Times** : unladen / loaded (in s)  
 Lifting .....6.27/6.5  
 Lowering .....4.64/4.54  
 Boom extension .....4.62/4.83  
 retraction .....3.55/3.84  
 Time unladen (in s)  
 Crowd .....3.02  
 Dump .....2.51


 **Tyres**  
 12.5 - 80 - 18 SGI  
 Option 10.5 - 18 TG 42 10 PR

 **Forks (mm)**  
 Length .....1200  
 Width .....125


 **Oil bath multidisc brakes on front axle**

 **Engine KUBOTA STAGE III A**  
 Type .....V3307 D1-T  
 Cylinder .....4/3331 cm<sup>3</sup>  
 Power (ISO 3046-1)  
 Turbo .....75 HP/55 Kw  
 Maximum torque .....265 Nm at 1500 tr/mn  
 Direct injection  
 Water cooling

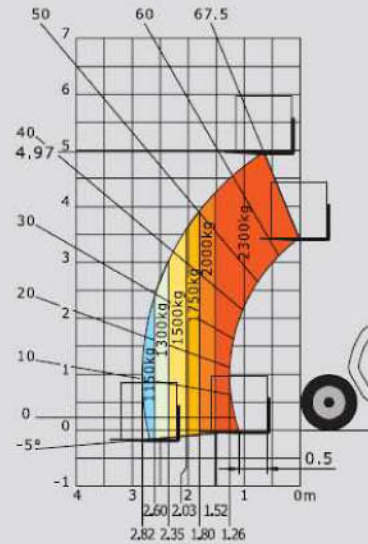
 **Transmission** .....hydrostatic  
 Electro - hydraulic reversing shift  
 One speed forward and reverse  
 Maximum travel speed up to .....25 km/h\*

 **Hydraulics**  
 Lifting/tilting pump : gear type : ...89 l./mn à 260 bars  
 Flow divider with priority to steering

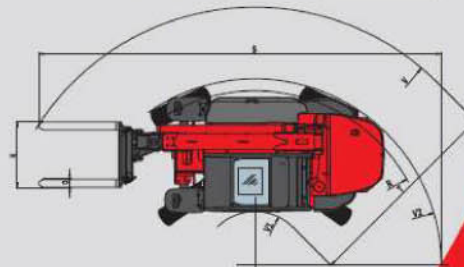
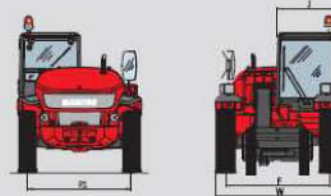
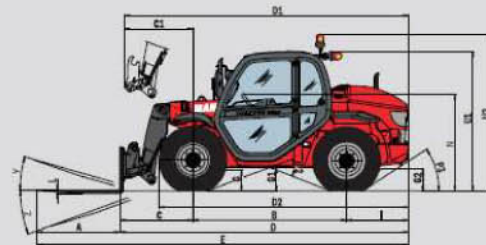
 **Capacities**  
 Cooling system .....13.7 l.  
 Transmission oil .....123 l.  
 Engine oil .....11.2 l.  
 Fuel tank .....94 l.

 **Weight unladen (with forks)** .....5240 kg  
**Overall width** .....1.80 m  
**Overall height** .....1.98\*\* or 2.01 m  
**Turning radius (outside wheels)** .....3.02 m  
**Overall length** .....4.20 m  
**Ground clearance** .....0.30 m  
**Drawbar pull** .....3495 daN

### Reach at maximum height : 0,64 m



Under EN 1459 annexe B



	MLT 523 Turbo
A	1200
B	2230
C	1069.5
C1	1005
D	4204.5
D1	4140
D2	3626
E	5404.5
F	1500
F1	1500
G	305
G1	355
G2	325
I	905
J	865
K	1020
L	45
N	1410
O	125
P2	39°
P3	31°
R	2870
S	6409
T	3130
U1	2010
U2	2300
V	4125
V1	995
V2	3025
W	1809
Y	12°
Z	120°

\*\* Tyres : 10.5 - 18

(mm)

**WINNER HANDLING**

SUSSEX: 01903 230700

SURREY: 01483 456789

EMAIL: SALES@WINNERHANDLING.CO.UK