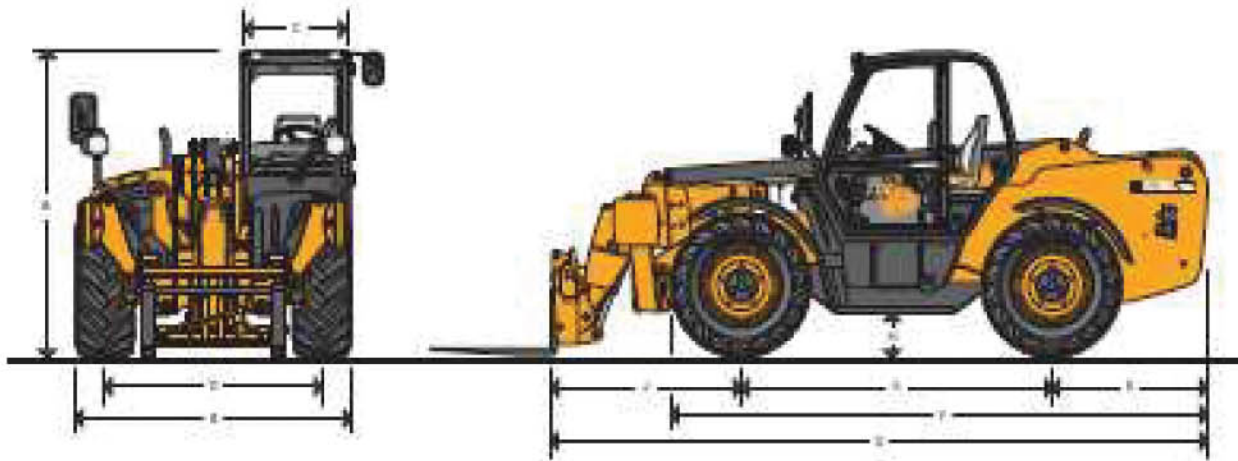


STATIC DIMENSIONS – 535-125 HiViz



STATIC DIMENSIONS – 535-125 HiViz

Machine model		535-125 HiViz
		m (ft-in)
A	Overall height	2.59 (8-6)
B	Overall width (over tyres)*	2.35 (7-9)
C	Inside width of cab	0.94 (3-1)
D	Front track	1.90 (6-3)
E	Wheelbase	2.75 (9-0)
F	Overall length to front tyres	4.74 (15-7)
G	Overall length to front carriage	5.80 (19-0)
H	Ground clearance	0.40 (1-4)
J	Front wheel centre to carriage	1.68 (5-6)
K	Rear wheel centre to rear face	1.37 (4-6)
	Overall width with stabilisers fully deployed	2.57 (8-5)
	Outside turn radius (over tyres)	3.75 (12-4)
	Carriage roll back angle @ ground level	degrees 37.0
	Carriage dump angle @ boom fully raised	degrees 12.5
	Weight	kg (lb) 9720 (21429)
	Tyres	15.5/80-24

WINNER HANDLING

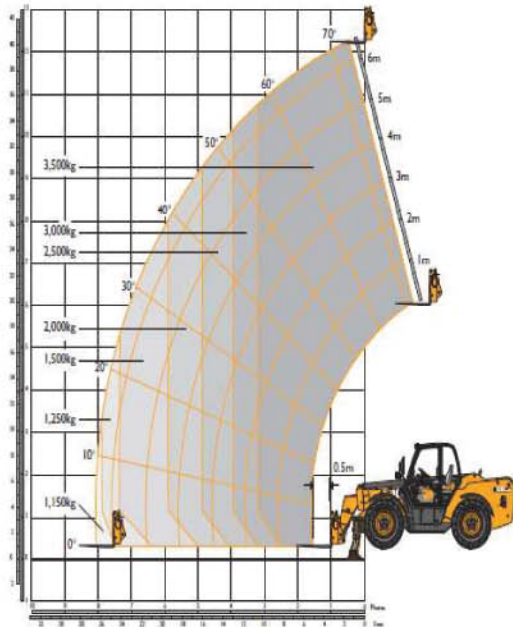
SUSSEX: 01903 230700

SURREY: 01483 456789

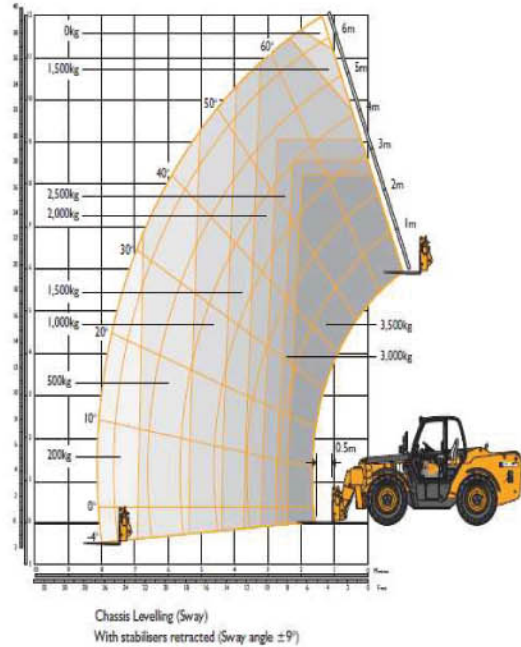
EMAIL: SALES@WINNERHANDLING.CO.UK



LIFT PERFORMANCE – STABILISERS EXTENDED – 535-125 HiViz



LIFT PERFORMANCE – STABILISERS RETRACTED – 535-125 HiViz



LIFT PERFORMANCE – STABILISERS EXTENDED – 535-125 HiViz

With Stabilisers Extended		
Maximum lift capacity	kg (lb)	3500 (7716)
Lift capacity to full height	kg (lb)	3500 (7716)
Lift capacity at full reach	kg (lb)	1150 (2535)
Lift height	m (ft-in)	12.28 (40-3)
Reach at maximum lift height	m (ft-in)	0.46 (1-6)
Maximum forward reach	m (ft-in)	8.06 (26-5)
Reach with 1 tonne load	m (ft-in)	8.06 (26-5)
Placing Height	m (ft-in)	11.75 (38-7)

LIFT PERFORMANCE – STABILISERS RETRACTED – 535-125 HiViz

With Stabilisers Retracted		
Maximum lift capacity	kg (lb)	3500 (7716)
Lift capacity to full height	kg (lb)	1500 (3307)
Lift capacity at full reach	kg (lb)	200 (441)
Lift height	m (ft-in)	12.07 (39-7)
Reach at maximum lift height	m (ft-in)	1.36 (4-6)
Maximum forward reach	m (ft-in)	8.10 (26-7)
Reach with 1 tonne load	m (ft-in)	5.31 (17-5)
Placing Height	m (ft-in)	11.43 (37-5)

HYDRAULICS

Gear pump with suction strainer and filter.

		535-125 HiViz	535-140 HiViz
Operating system pressure	bar (psi)	260 (3770)	260 (3770)
Pump flow	litres/min	110	110
Hydraulic Cycle Times	Seconds	Seconds	Seconds
Boom raise		10.4	13.5
Boom lower		8.1	11.0
Extend		15.7	15.6
Retract		12.8	14.4
Bucket dump		1.8	1.7
Bucket crowd		2.3	2.0

SERVICE CAPACITIES

Fuel tank	litres (UK gal)	125 (27.5)
Hydraulic tank	litres (UK gal)	127 (27.9)
Coolant	litres (UK gal)	23 (5.1)

WINNER HANDLING

SUSSEX: 01903 230700

SURREY: 01483 456789

EMAIL: SALES@WINNERHANDLING.CO.UK